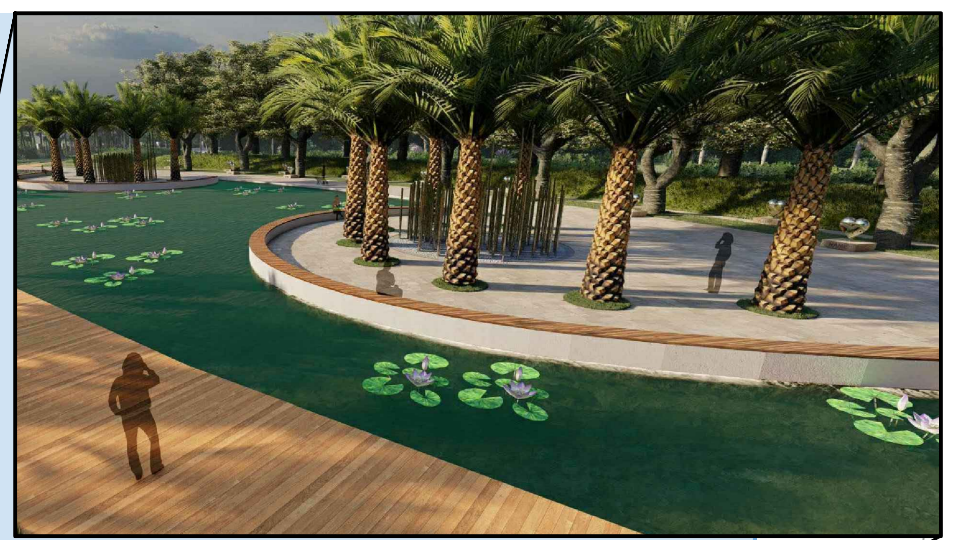
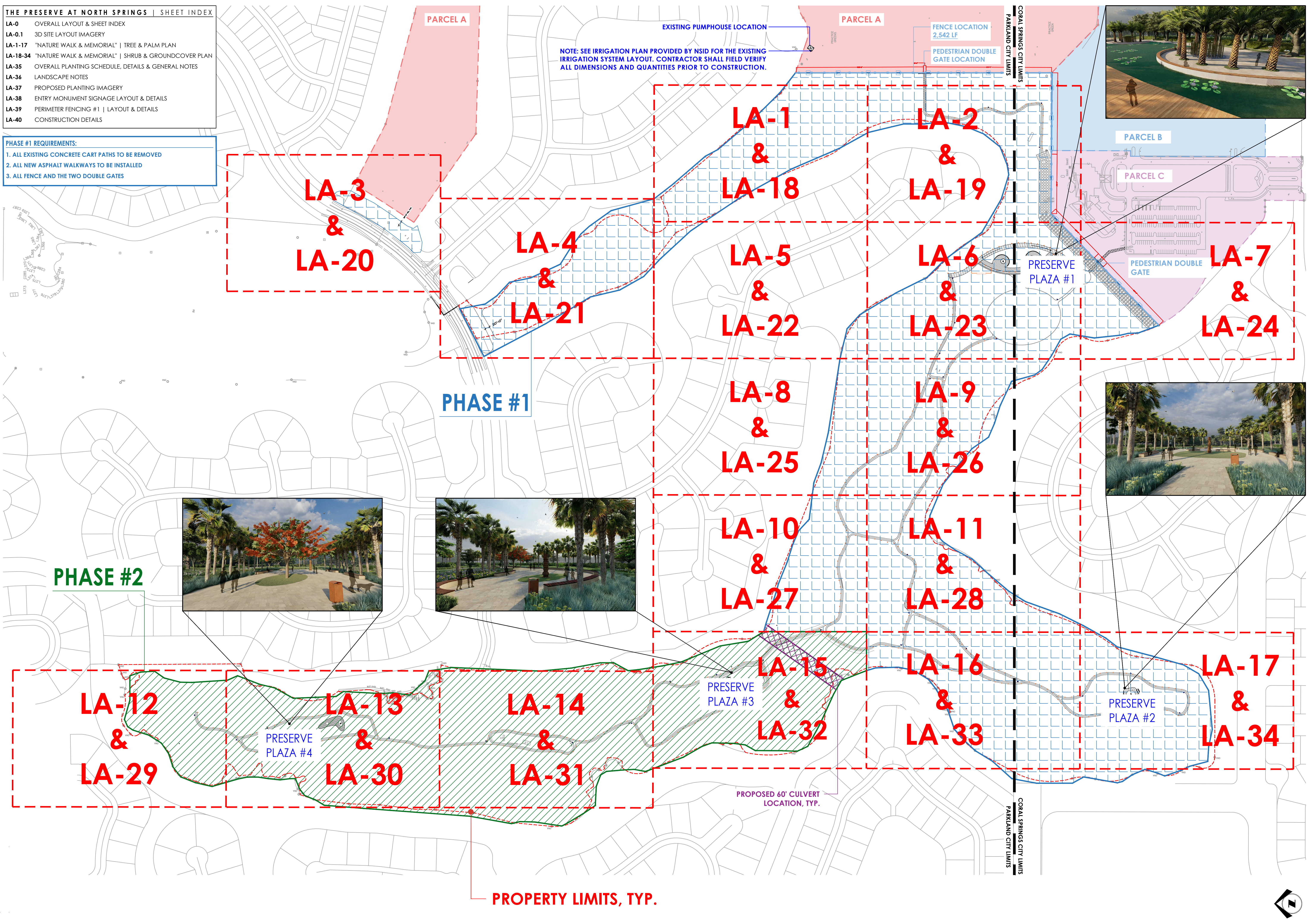
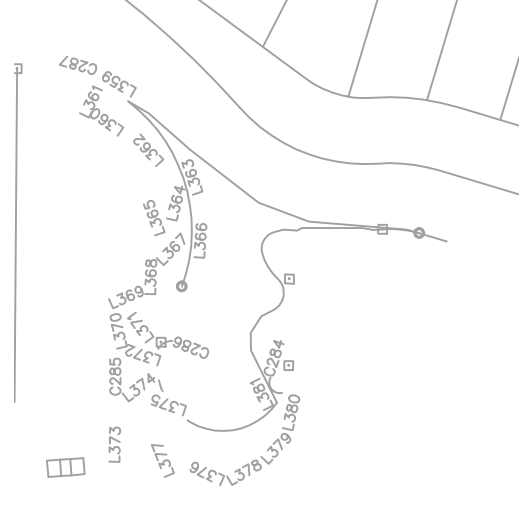


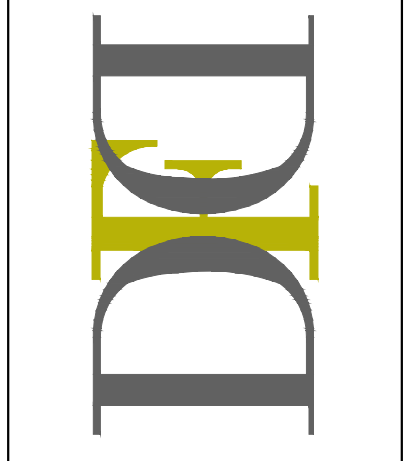
THE PRESERVE AT NORTH SPRINGS | SHEET INDEX

LA-0	OVERALL LAYOUT & SHEET INDEX
LA-0.1	3D SITE LAYOUT IMAGERY
LA-1-17	"NATURE WALK & MEMORIAL" TREE & PALM PLAN
LA-18-34	"NATURE WALK & MEMORIAL" SHRUB & GROUNDCOVER PLAN
LA-35	OVERALL PLANTING SCHEDULE, DETAILS & GENERAL NOTES
LA-36	LANDSCAPE NOTES
LA-37	PROPOSED PLANTING IMAGERY
LA-38	ENTRY MONUMENT SIGNAGE LAYOUT & DETAILS
LA-39	PERIMETER FENCING #1 LAYOUT & DETAILS
LA-40	CONSTRUCTION DETAILS

- PHASE #1 REQUIREMENTS:**
1. ALL EXISTING CONCRETE CART PATHS TO BE REMOVED
 2. ALL NEW ASPHALT WALKWAYS TO BE INSTALLED
 3. ALL FENCE AND THE TWO DOUBLE GATES



DAVID FONT DESIGN
 INTERIOR | EXTERIOR
 11820 N.W. 37th Street
 Coral Springs, Florida 33065
 PH: 954.283.8839 FAX: 954.773.9841
 EMAIL: INFO@DAVIDFONTDESIGN.COM



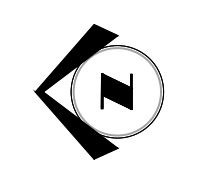
THE PRESERVE AT NORTH SPRINGS
 CORAL SPRINGS • PARKLAND

DAVID FONT, A.S.A. P.L.A.
 LA 6666822

REVISIONS:

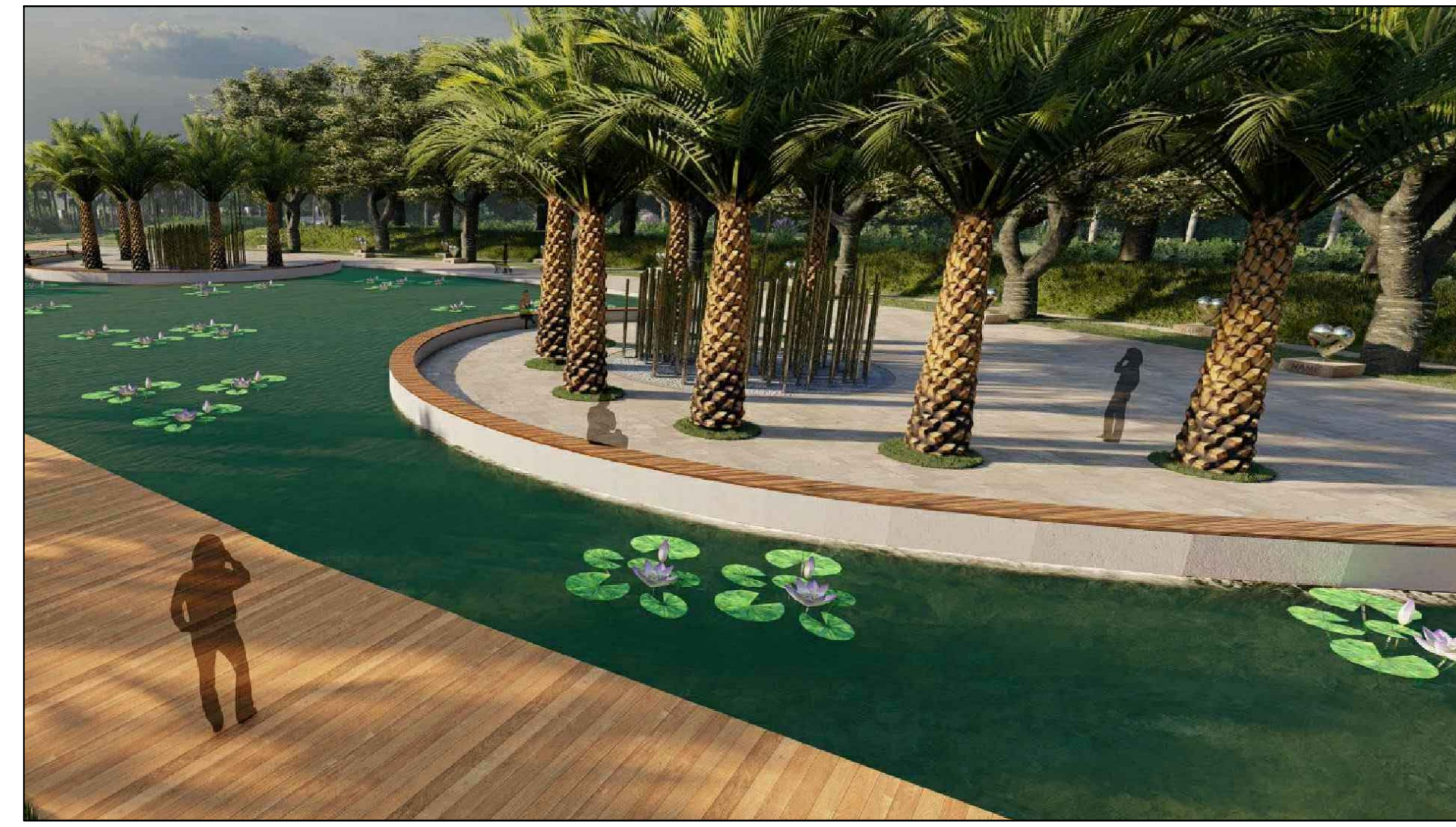
SUBMITTAL DATE
 4/10/2023

LA-0





MAIN ENTRY - MEMORIAL POINT | **VIEW #1**



MEMORIAL POINT | **VIEW #2**



MEMORIAL POINT | **VIEW #3**



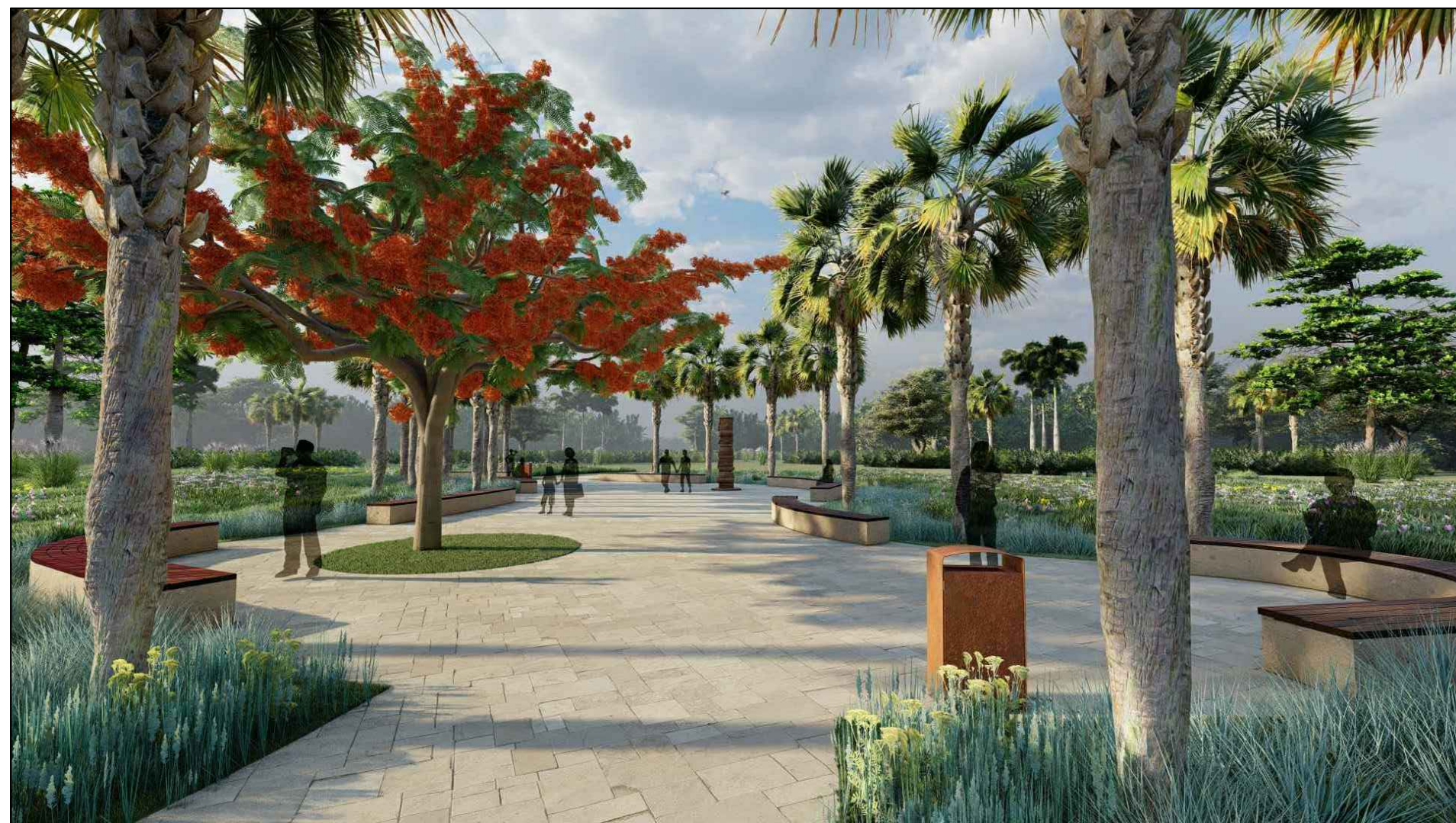
MAIN ENTRY - MEMORIAL POINT | **VIEW #4**



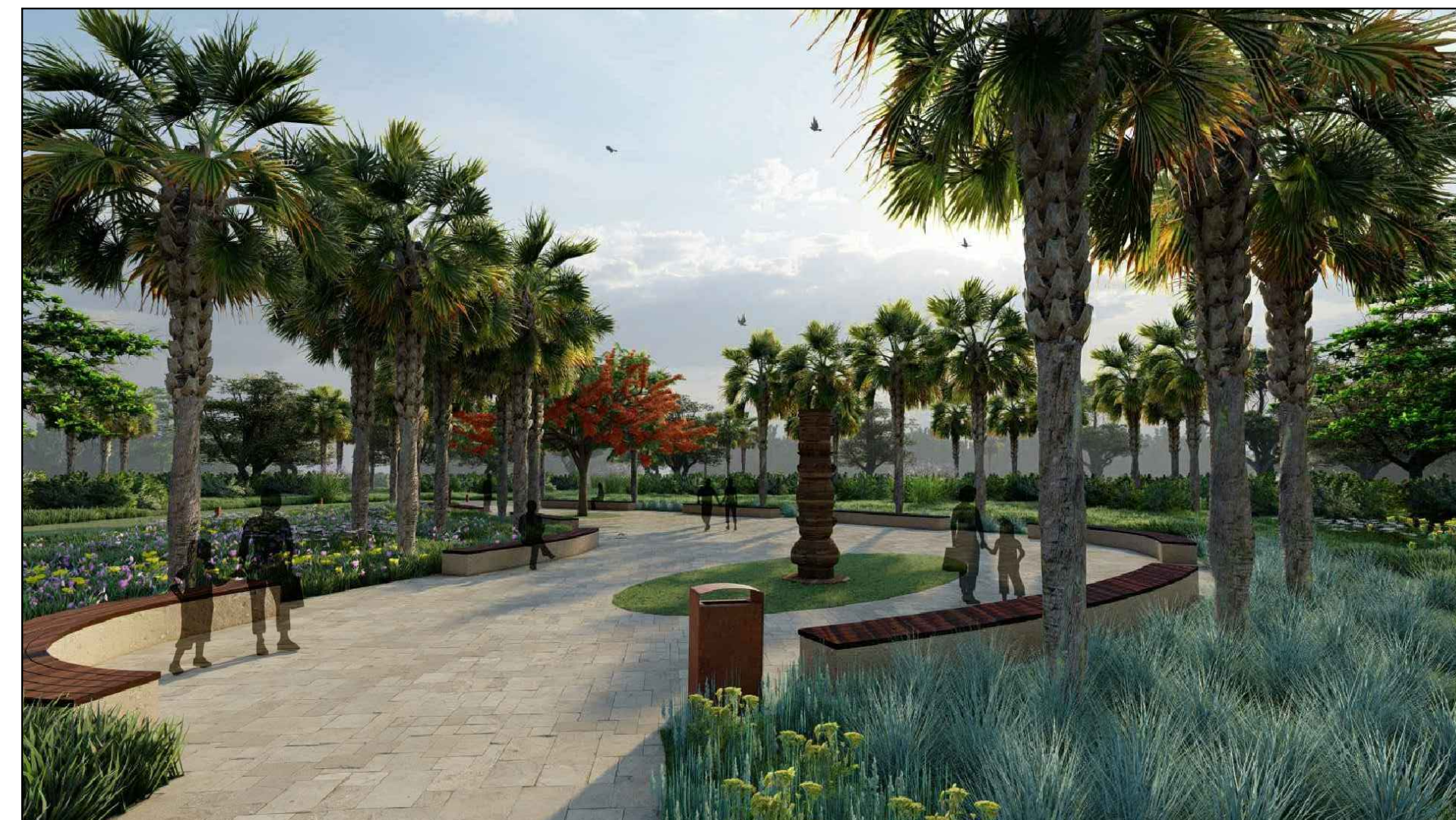
TYPICAL PRESERVE PLAZA #1 | **VIEW #5**



TYPICAL WALK VIEW | **VIEW #6**



PRESERVE PLAZA #2 | **VIEW #7**



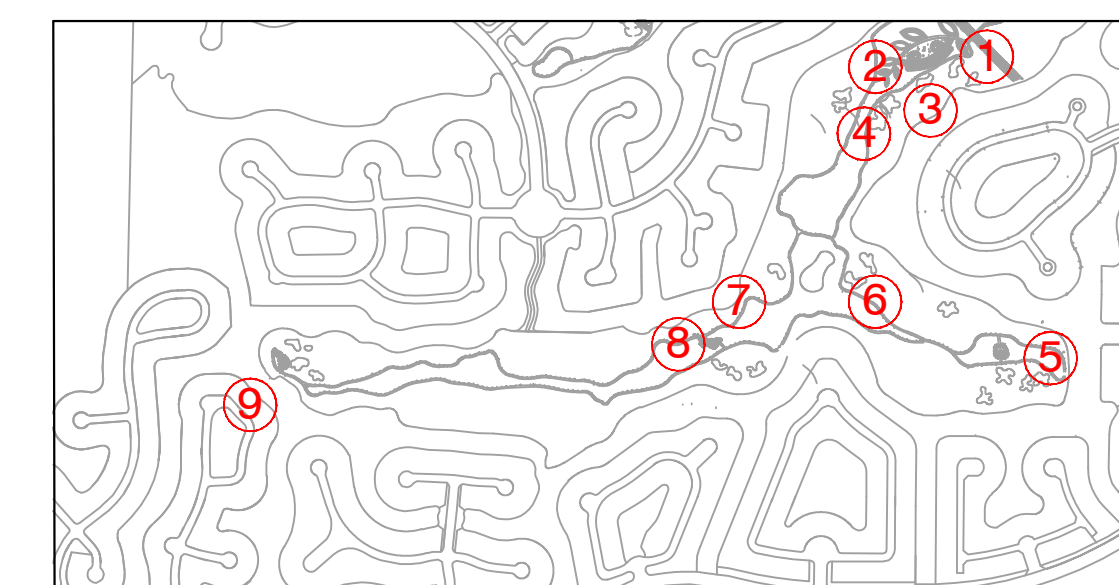
PRESERVE PLAZA #2 | **VIEW #8**



PRESERVE PLAZA #3 | **VIEW #9**

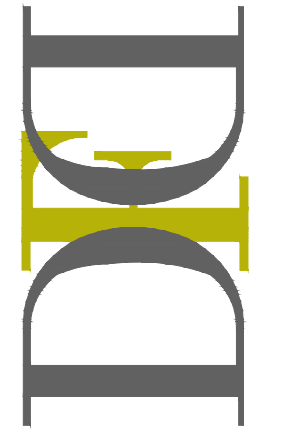
3D SITE LAYOUT IMAGERY

THE PRESERVE AT NORTH SPRINGS



VIEW KEY

DAVID FONT DESIGN
INTERIOR | EXTERIOR
11820 N.W. 37th Street
CORAL SPRING, FLORIDA 33065
PH: 954.283.8839 FAX: 954.773.9841
EMAIL: INFO@DAVIDFONTDESIGN.COM



THE PRESERVE AT NORTH SPRINGS
CORAL SPRINGS • PARKLAND

DAVID FONT, ASLA, PIA
LA 6666822

REVISIONS:

SUBMITTAL DATE

4/10/2023

LA-0.1



CC6 | JAMAICA CAPER



CM2 | CLUMPING FISHTAIL PALM



CD | PIGEON PLUM



CU | SEA GRAPE



CS | SILVER BUTTONWOOD



CO | ORANGE GEIGER TREE



MF | SIMPSON STOPPER



PC4 | CANARY ISLAND DATE PALM



PE3 | SLASH PINE



QV/ QV2 | SOUTHERN LIVE OAK



RR/ ROX | ROYAL PALM



SS | SABAL PALM



TD | BALD CYPRESS



TR | FLORIDA THATCH PALM



WRX/ WRX2 | MEXICAN FAN PALM



CS2 | SMALL-LEAF CLUSIA



C12 | COCO PLUM



CSS | SILVER BUTTONWOOD



HP | FIREBUSH



IV | DWARF YAUPON HOLLY



AM | NATIVE WILDFLOWERS



SOD | BAHIA GRASS



SR | SAW PALMETTO



TF | FAKAHATCHEE GRASS

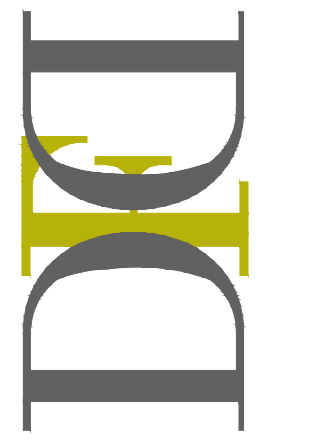


ZA2 | CARDBOARD PALM



ZP | COONTIE

DAVID FONT DESIGN
INTERIOR | EXTERIOR
11820 N.W. 37th Street
Coral Springs, Florida 33065
PH: 954.283.8839 FAX: 954.773.9811
EMAIL: INFO@DAVIDFONTDESIGN.COM



THE PRESERVE AT NORTH SPRINGS
CORAL SPRINGS • PARKLAND

DAVID FONT, A.S.A. P.L.A.
LA 6666822

REVISIONS:

SUBMITTAL DATE

4/10/2023

PROPOSED PLANTING IMAGERY

SEE CORRESPONDING PROPOSED PLANTING PLAN ON SHEETS LA-1-34

LA-37